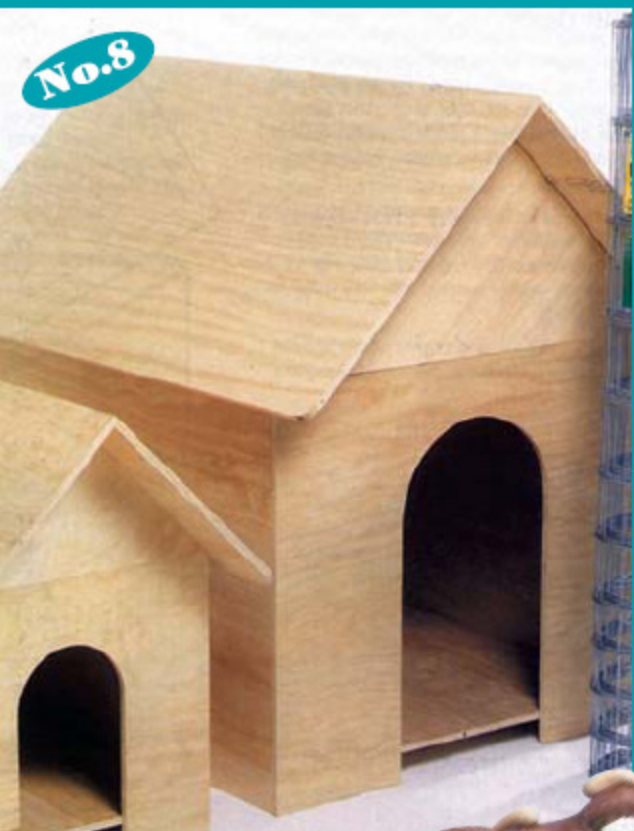


Build your own Dog Kennel

No. 8

DO IT YOURSELF INSTRUCTION LEAFLET



"This brochure will give you a guide to building a dog kennel. For all materials, tools and any further help or advice you may want, just come and see us at Home."



Big or small, a home for man's best friend

Here's a great way to repay man's best friend for his loyalty - build him a kennel he can call HoME, a refuge from humans where he can be top dog.

This attractive, functional design can be easily adapted to accommodate all creatures - both great and small! You can easily build this kennel with it's unique hinged roof style.

The kennel is made using structural grade plywood supplied from your local HOME store. Plywood is strong, relatively light weight and durable, retains it's original shape in all climates and is quite suitable for outdoors, provided it is well coated with good quality paint or stain to suit the surrounding environment.

The Right Tools

To do the best job possible, you need the right tools; and feel like a professional!

You'll need:

- a handsaw or power circular saw
- a carpenter's square
- good pencil
- tape measure or folding rule
- electric drill/screwdriver
- claw hammer
- jigsaw
- caulking gun
- adjustable wrench



The Right Materials

You'll need to visit your nearest HOME Timber & Hardware store and purchase the RIGHT materials:

Structural grade plywood, 12mm thick

- 2400 x 1200mm - 1 sheet
- 100 x 50mm sawn treated pine for floor frame - 1 @ 2.7m
- 50 x 50mm for roof cleat - 1 @ 0.6m
- bullet head galvanised nails for floor frame assembly - 100mm x 4.5mm
- bullet head galvanised nails for plywood walls assembly - 40mm x 2.0mm
- or, use countersunk zinc plated screws for plywood - 40mm x 6g
- construction grade adhesive - 1 cartridge
- silicone sealant - 1 cartridge
- 2 x 50mm galvanised hinges and 20mm x 6mm galvanised cup head bolts and nuts
- galvanised hasp and staple and 20mm x 6mm galvanised cup head bolts and nuts

OPTIONAL

- corrugated Colourbond roofing and 12mm galvanised clouts
- foil insulation for underside of roof

Remember, always check measurements TWICE, before cutting ONCE.

Planning the Kennel Size

The kennel should be just big enough for the dog to stand up and spin around in, before settling down for a well-deserved nap. So here's a rough guide:

- small size for toy breed and most small terriers
- medium size for hounds, Labradors, Irish Setters, Corgis, Cocker Spaniels, German Shepherds, Boxers etc.
- large size for Afghans, Old English Sheepdogs, Great Danes etc. and also for small dogs sharing.

Refer to the table below for material sizes after determining the size of the kennel you should build for your dog.

Table 1. Overall Dimensions in mm

Size	Length	Width	Wall Height	Peak Height	Total Height
Small	600	480	440	240	680
Medium	1000	800	680	400	1080
Large	1500	1200	1080	600	1680

Table 2. Door Opening Dimensions

Size	Height	Width
Small	340	180
Medium	580	310
Large	980	400

STEP 1

Build the Floor Frame

To keep the kennel (and your dog) high and dry inside, the floor should be at least 100mm off the ground to allow air circulation. So start building the sub-floor frame first using the 100 x 50mm treated pine - it's a must because it's virtually rot proof and termite proof.

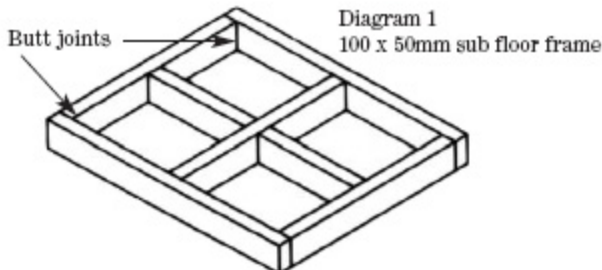
These sizes are for the small size kennel.

Cut the 100 x 50mm treated pine for the floor frame as follows:

- 2 pieces 575mm long sides
- 3 piece 375mm long ends and centre
- 2 pieces 215mm long short cross pieces

For the larger kennels, follow the dimensions shown on Tables 1 & 2 and work out each piece size in the same way as the small example shown above.

First, square one end of the timber using a carpenter's square and mark a pencil line across all 4 sides of the timber, then cut neatly with a hand or power saw. Now, using the dimensions in Table 1, again using the square and pencil, measure and cut each piece to length making sure that all end saw cuts are square to ensure strong joins. Next, lay the pieces to form the frame perimeter on a firm, flat surface, butt join each corner with 2/100mm x 4.5mm galvanised bullet head nails, driving them on a slight angle towards each other for greater strength.



Now, measure and cut the centre frame crosspieces and nail in place (Diagram 1). Then drill several 12mm dia. holes about 150mm apart through the frame members approx. 70mm down from the top of the frame to provide cross ventilation and help keep the ground under the kennel dry.

Lastly, measure and cut a piece of the 12mm plywood and fix it to the sub-floor frame using a continuous bead of the construction adhesive along the top of each frame piece and galvanised nails along all sides and crosspieces.

STEP 2

Cut the Walls & Roof Sections

As a guide to cutting the walls and roof pieces from the sheet of 2400 x 1200 x 12mm plywood, here is a sample cutting list for the small size kennel :

Sides:	576 x 440mm	- 2 off
Ends:	480 x 440mm	- 2 off
Roof:	775 x 400mm	- 1 off
	775 x 412mm	- 1 off
Gables:	480 x 240mm	- 2 off
Floor:	575 x 480mm	- 1 off

Mark out as shown on the sheet diagram to eliminate any mistakes and wasted timber (Diagram 2).

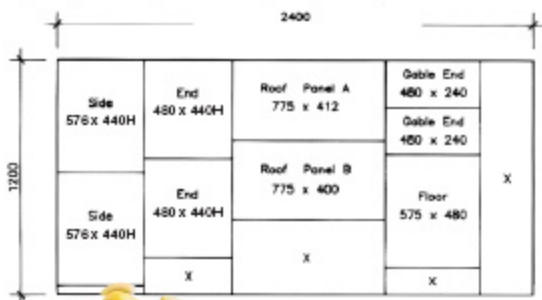


Diagram 2
Plywood sheet cutting
pattern for small kennel



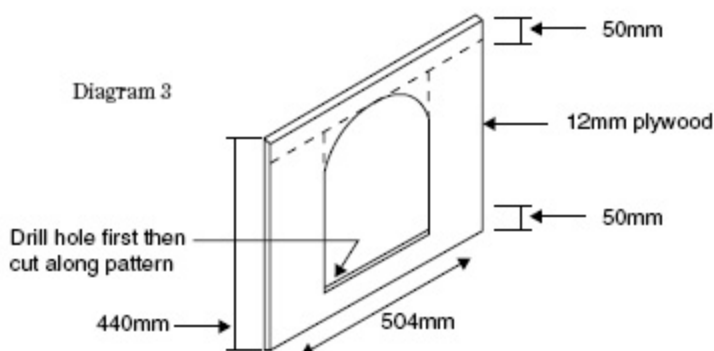
STEP 3

Making the Door

Cut the door opening out of the front wall piece before it's fixed to the floor. You will see that the front and rear wall pieces have been cut 24mm wider than the floor width - this allows 12mm (the plywood thickness) on each side for the side walls to be butt joined inside the end wall pieces. You will have already cut the wall sizes to suit the kennel size you have decided to build (refer to Tables 1 & 2).

Now, take one end wall piece and measure 50mm from the top and bottom and mark a pencil line right across. Then measure in from each side as shown to give the desired door opening, as in Table 2 and pencil in the rounded top (use a paint can, jam tin or similar round object to give the curved shape you want).

Now, using a jigsaw, cut out the door opening by first drilling an 8mm hole in one corner, then starting at the hole, cut around the straight sides and curved top (Diagram 3).



STEP 4

Assembling the Sides

Start with the front (door opening) wall, and using construction adhesive and 40 x 2.0mm galvanised nails or 40mm x 6 gauge plated screws, fix it to the sub-floor frame. Nails or screws should be placed every 200mm apart. Fix walls down about 30mm from the top of the sub-floor frame (measure & pencil mark a line all around the frame at 30mm to ensure that all the wall pieces line up at the same level). Now fix the rear wall in the same way, allowing the 12mm overhang each side to take the side walls.

The two side walls are now fixed in place, using construction adhesive on the vertical butt joints, glue and screw them to the frame as before and finish off by nailing the end walls to the side walls at the joins.

STEP 5

Assembling the Roof

To allow for easy cleaning and airing of dog smells, the roof has been designed to open to the rear. The roof corners have also been rounded to reduce the chance of injury.

The roof's pitch is formed by the 45° triangular gable ends front and rear. These are made by measuring the width from the outside of the side walls across the top of the front and rear walls. Then, allowing for the peak height shown in Table 1, cut 2 pieces of plywood to size. From the outside, tack the triangular gable ends temporarily in position with a small piece of scrap timber, resting on top of the front and rear walls.

Now, the roof panels should be assembled from the sections you have already cut. Panel A should have been cut 12mm wider than Panel B to allow for the thickness of the plywood when the two pieces are butt joined at the peak of the triangular gable ends, cleat to be cut 576mm (Diagram 4).

Assemble the roof by placing the cleat on the inside of Panel B to line up with the apex of the gable ends, ensuring that there is a 50mm overhang at the side and one end (back), and 125mm at the other end (front). It would be best to mark the position of the overhangs on the underside of the panel first.

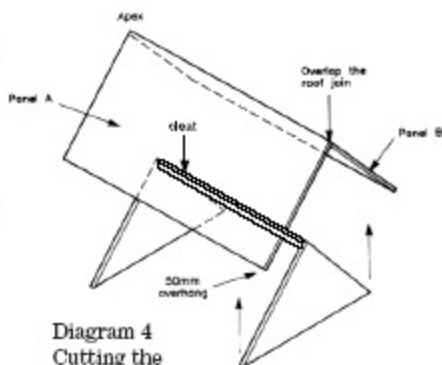


Diagram 4
Cutting the
roof panels

Next, apply adhesive to the edges of the gable ends that contact the roof panel and tack into position with small nails - don't drive nails all the way in as you will need to remove them once the screws are placed securely. Panel A is then positioned to overlap Panel B at the apex (Diagram 4) and fixed in the same way. When both panels are fully screwed in place, apply a bead of silicone to the inside of the roof ridge joint to provide an effective seal. Now, as shown in Diagram 5, attach the two hinges to the rear wall and gable end, and the roof lock to the front wall and gable end with the 20mm x 6mm cup head bolts and nuts. Then remove the small pieces of scrap timber used to temporarily hold the walls and gable ends in place and raise the roof on the hinges. Again, use the silicone to seal all the other inside joins in the roof and walls to keep the weather out.

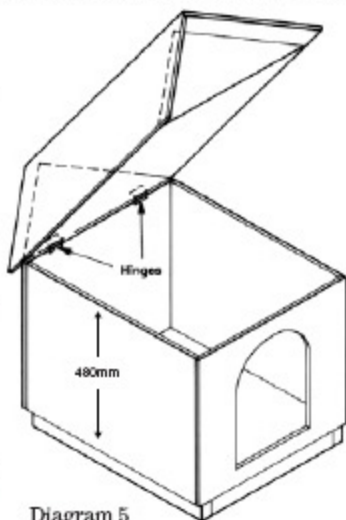


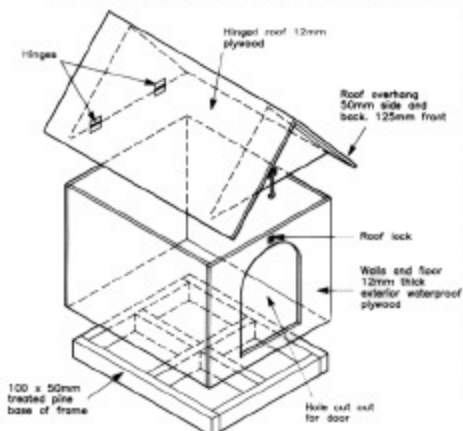
Diagram 5
Fix roof lock
and hinges

STEP 6

Finishing the Kennel

To ensure a long life for your new kennel, the plywood must be finished with an exterior gloss or semi-gloss paint to protect it - a light colour will help keep the inside temperature down for the dog. Make sure that all the edges of the plywood receive plenty of paint to seal the cut ends. It is best not to paint the

inside of the kennel but do paint the underside of the floor and frame sections, as it will help prevent dampness from seeping into the kennel. It's also a good idea to allow several days for the paint to fully dry and the paint smell to evaporate



before introducing your dog to it's new abode.

You may also choose to add a bit of style to the kennel by covering the roof with some Colourbond corrugated steel sheet - cut to size and fix to the plywood with construction adhesive and 12mm galvanised clout or self-tapping screws. Adding some insulation to the inside of the roof will reduce the noise from heavy rain/hail. Don't forget to fix a length of steel capping to the Colourbond sheeting at the ridge line.

Tips from the Trade

- When using power tools, protect your eyes with suitable goggles and especially with a power saw, use ear muffs protection.
- Don't use any power tools if the floor you are standing on is wet or even just damp - get a piece of dry plywood or hardboard to stand on.
- Double check all measurements and pencil markings before cutting the timber. Measuring is easy, but wasting timber is expensive.
- To protect joints in timber projects that butt together, paint the abutting edges first before fixing together. Also use a sanding block to smooth the cut ends.
- When you need several pieces of timber to be exactly the same length, try and clamp as many as possible together then cut altogether.
- Butt joints must be cut perfectly square to give a strong neat join. Always use a carpenter's square and good pencil to mark a line across all four sides of the piece of timber.

IMPORTANT: This instruction leaflet has been produced to provide basic information and our experienced staff are available to answer any questions you may have. However, the use of this information is on the understanding that Home Timber and Hardware (including its author, owners and proprietors) disclaim all and any liability for any damages or other amounts found to be recoverable resulting from such information, even when given negligently or attributable directly or consequentially upon any act or omission of Home Timber and Hardware. Should Home Timber and Hardware be found liable in any way for the information provided, the user acknowledges and agrees that such liability shall be deemed null and void. The user is advised to call in a qualified tradesman, such as an electrician or plumber, where expert services are required.

WARNING: there may be by-laws or regulations of councils or statutory bodies that need to be fulfilled in the leaflet.

Your local Home Store is:

